

# Colaiste na hInse -Transition booklet 2024/25

6th class to 1st yr



# Coláiste na hInse - Transition booklet

---

THIS BOOKLET IS THE FIRST STEPPING- STONE TOWARDS  
YOUR TRANSITION TO  
YOUR NEW POST- PRIMARY SCHOOL.  
WE LOOK FORWARD TO BEING A PART OF YOUR POST  
PRIMARY EDUCATIONAL  
JOURNEY.

WELCOME TO THE COLÁISTE NA HINSE CLANN!

-NIAMH O'NEILL & RACHEL NOONAN  
ADDITIONAL NEEDS COORDINATORS (AEN)





# Principal's Welcome

You are very welcome to Coláiste na hInse.

In this school we use the name Iníon for our female staff and Máistir for our male staff. My name is Iníon Ross and I am delighted to welcome you to the Coláiste na hInse Clann (family).

In this booklet you will learn a little more about your new school.

You will be told important information, like when lunch (lón) and break (sós) times are. You will be shown an example of a school timetable which will be like the one you will get for yourself when you start here.

I hope you enjoy your visit to CNI and I am really looking forward to meeting you all in Coláiste na hInse very soon.

Take Care.

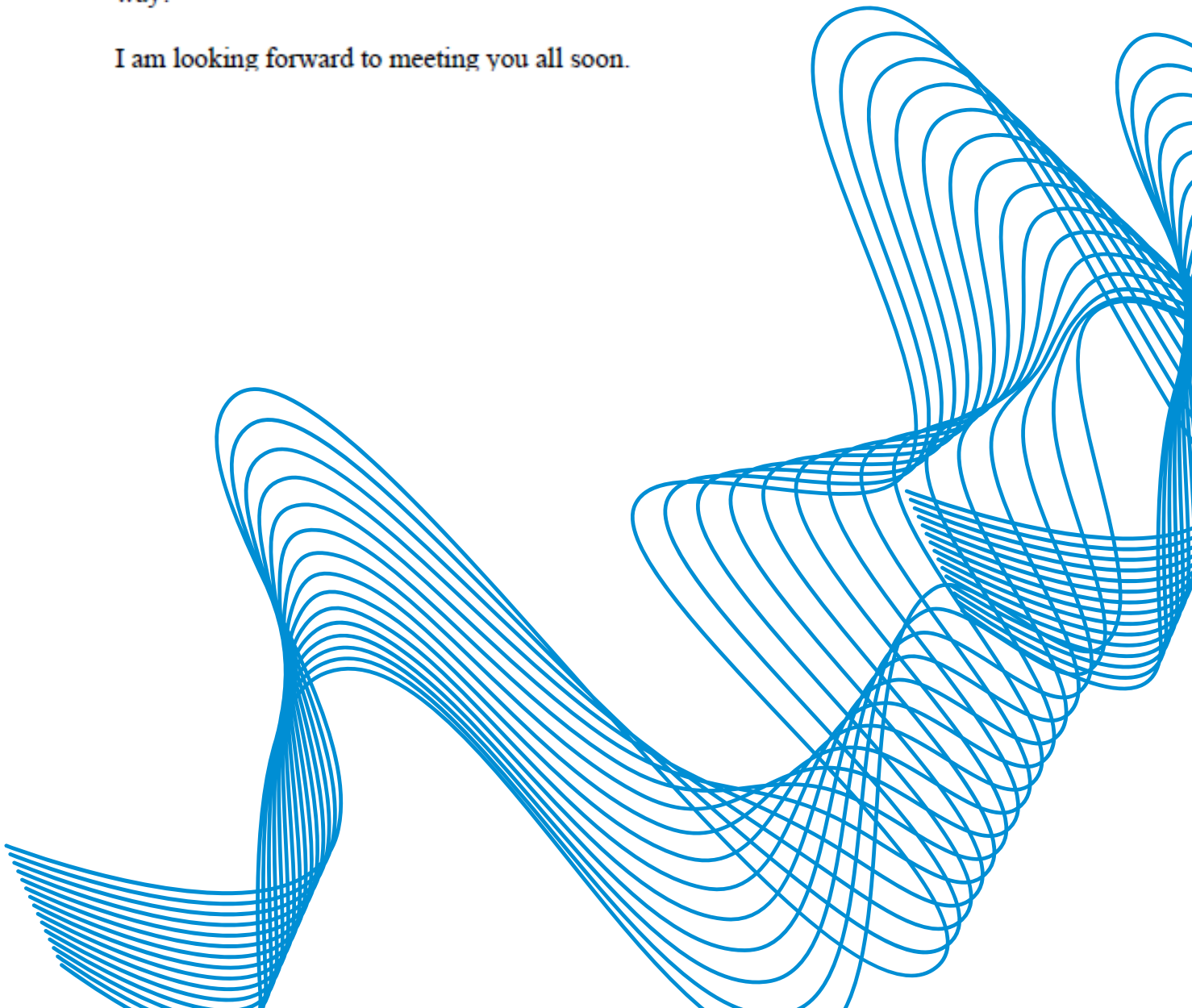
# Your Réaltóir (year head)

My name is **Iníon Tiernan**. I will be your Réaltóir (Year Head) in Coláiste na hInse. I am here to support and help all the first year students in Coláiste na hInse.

You will also have a Caomhnoir (tutor). Your caomhnoir will be with you every morning 8.48-9am throughout 1<sup>st</sup>, 2<sup>nd</sup> & 3<sup>rd</sup> year. Your Caomhnoir will help you get ready for the day & can answer any questions you have about school. The Caomhnoir is a huge support to first years.

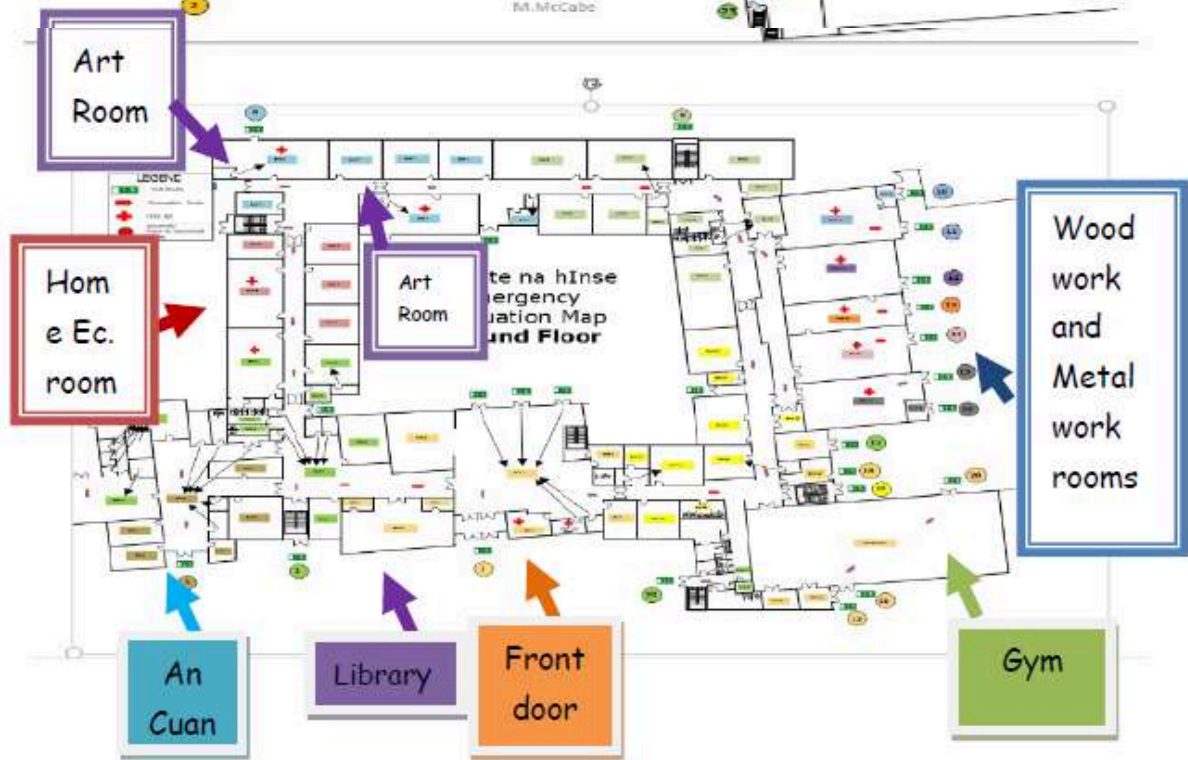
We are so excited about you all joining us in August. I know it will be a big change for you all but there are lots of people to help you. You are going to learn lots of new things, meet lots of new people and have lots of fun along the way!

I am looking forward to meeting you all soon.



# Coláiste na hInse Floor plan

## First Floor (Upstairs)



## Ground Floor (Downstairs)



An *Grianán* is where most of the students have lunch, or where there might be assembly.

It will be the first thing you see when you walk in.

Juniors have to stay downstairs at lunch and break time.

The canteen is in An *Grianán* (picture below)



Our  
Canteen

# School Office/ Oifig



This is the school office, but it is normally called the oifig.  
This is the Irish for office.

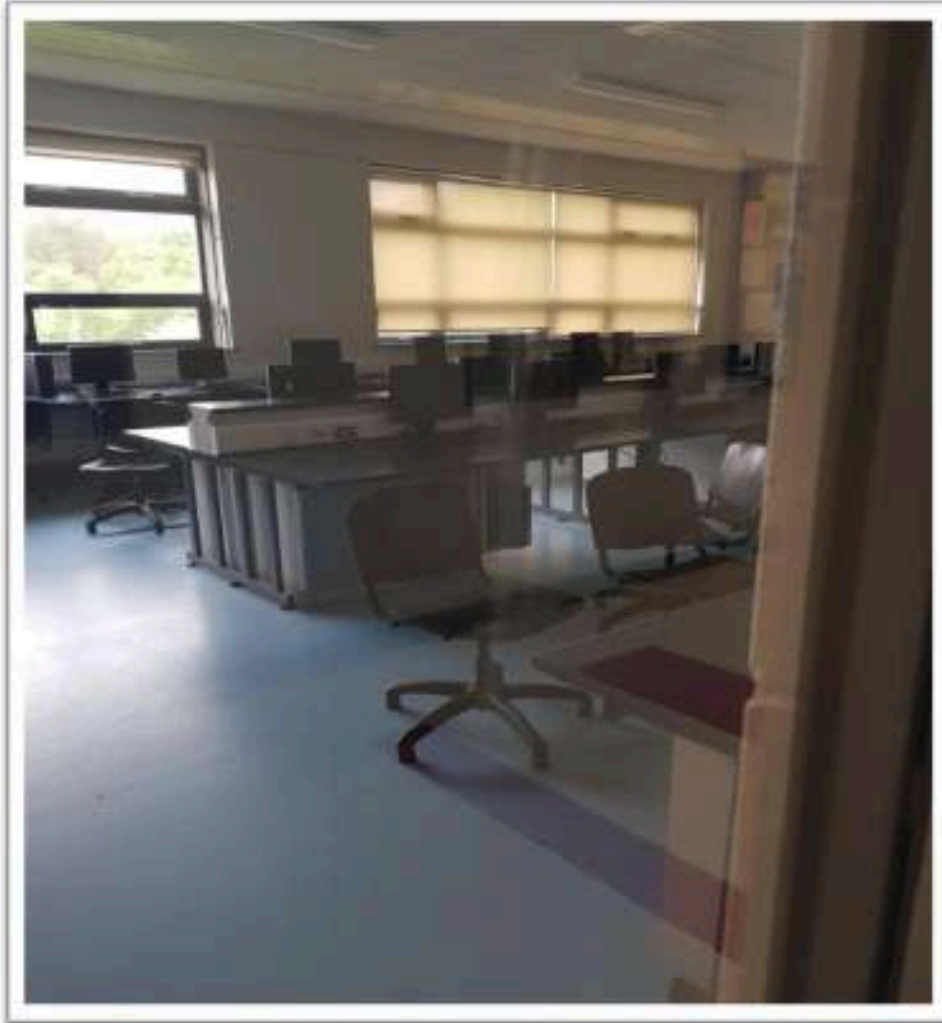
**Inion Ludlow & Inion Killeen** are the lovely ladies who work in  
the office.



This is our library/ leabharlann.

It is packed with lots of books to read. It also has a wonderful mindful area and computers.

# Computer rooms

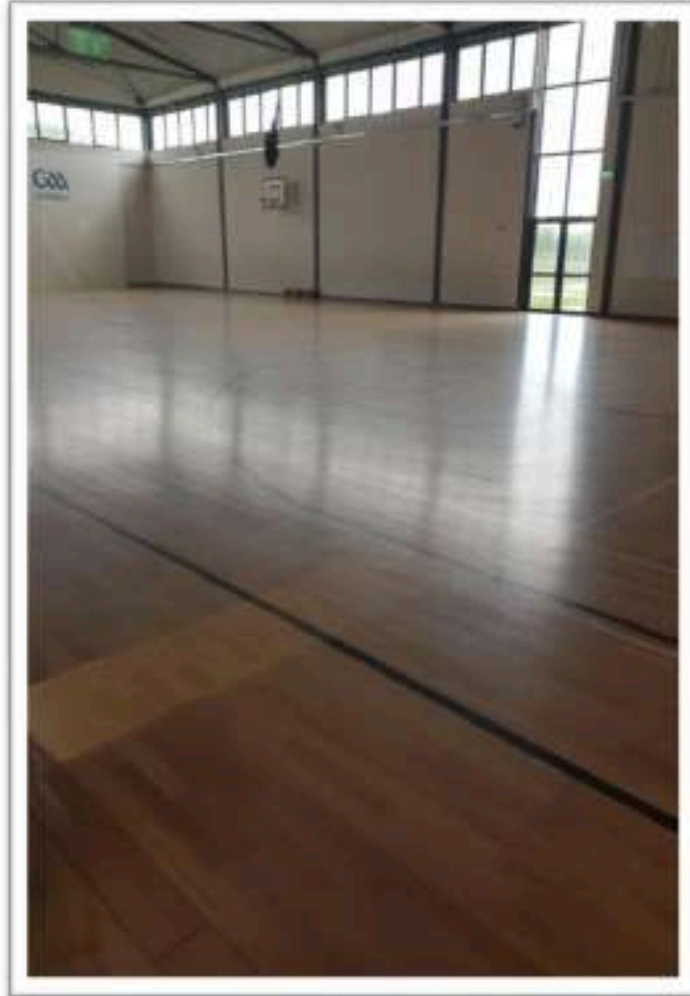


We have four computer  
rooms.

2 Upstairs &

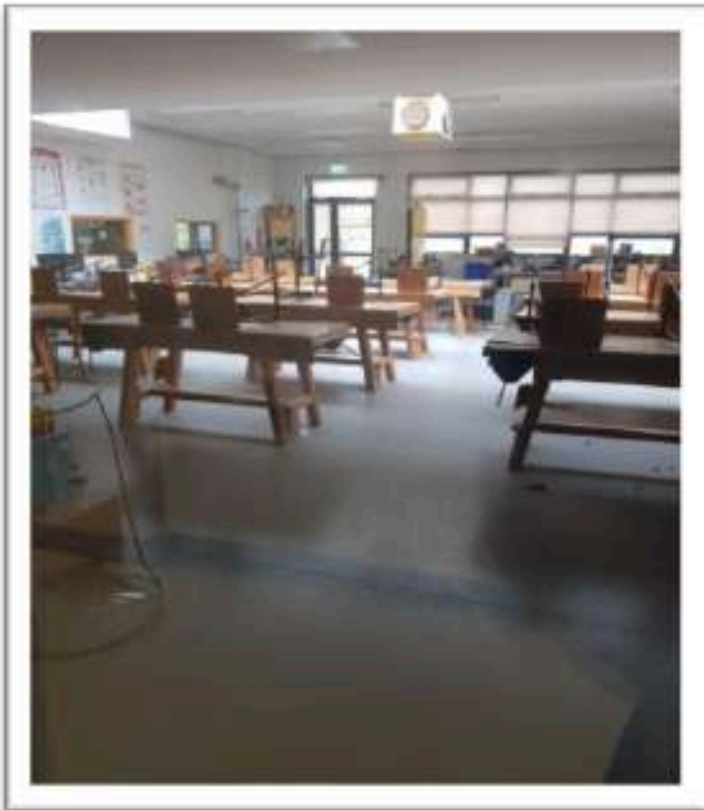
2 Downstairs

# Gym/ Halla Spóirt



This is our gym. It's great.

It has basketball nets and a GAA hand ball wall and upstairs has a full equipped gym.



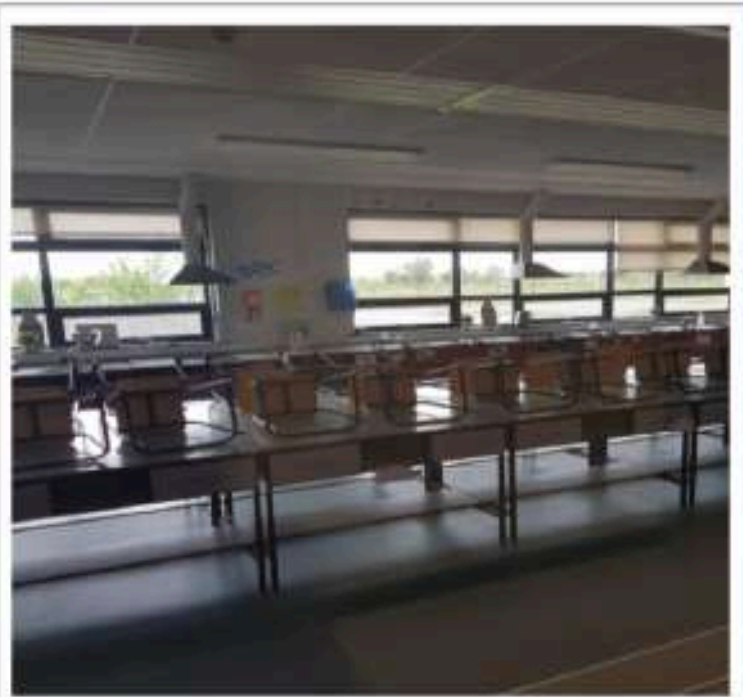
WOODWORK



METAL WORK

ART

HOME ECONOMICS



# **Learning & Language Support/AOS**

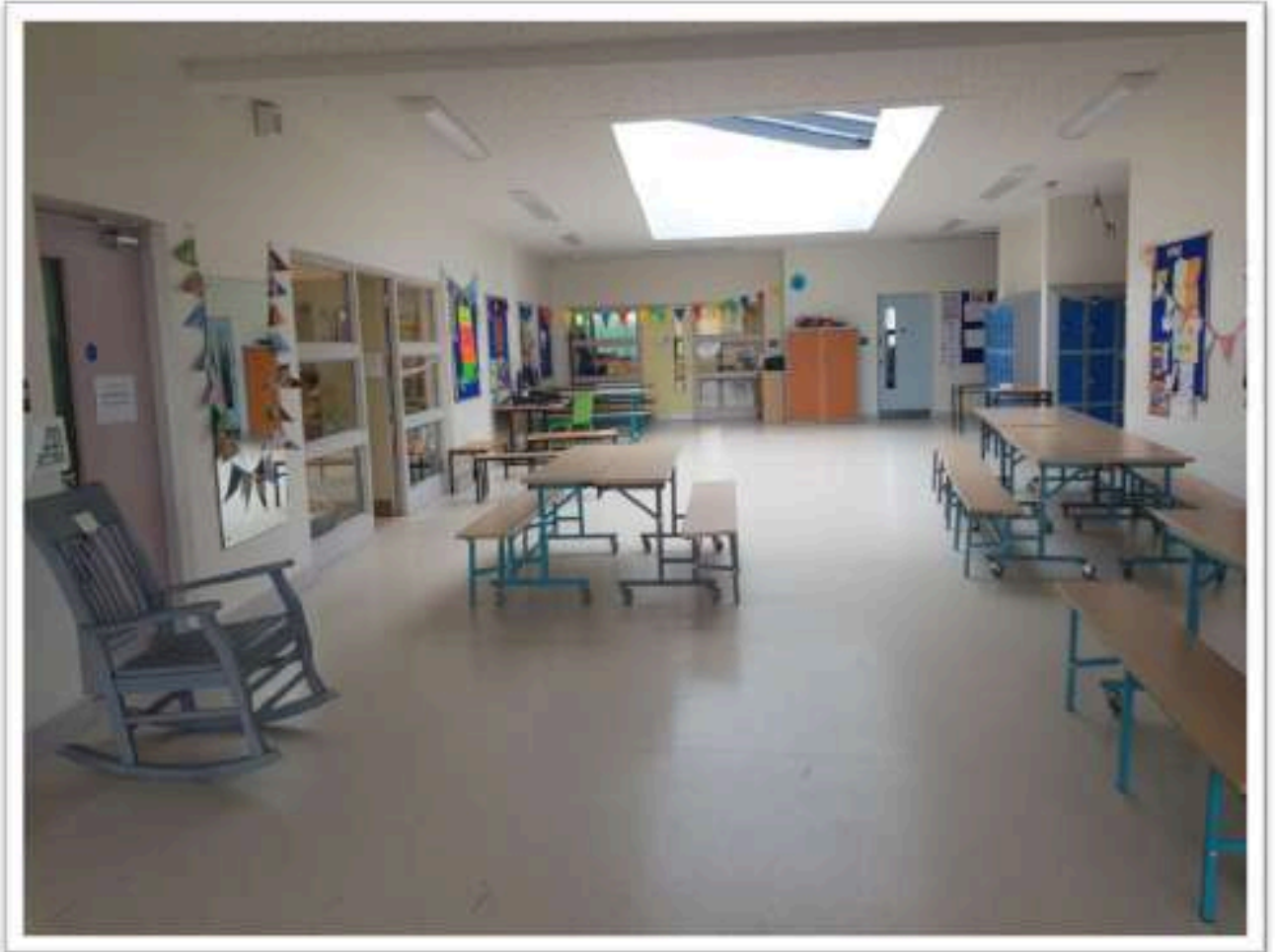
Learning and Language support is called Áos (pronounced ace) in CNI.

We work with students to support you in every possible way to achieve your individual potential.

**Iníon O'Neill/ Iníon Noonan (AEN Co-ordinators)**

**Iníon Donoghue (RACE)**

# An Cuan



This is An Cuan.

This is where some  
students with autism  
come to learn.

This is their lunch area.



Your new school, **Colaiste na hInse**, is a secondary school for boys and girls.

There are around 1100 students in the whole school. We have 180 in 1st year.

Some of the mainstream subjects in Coláiste na hInse are:

- English
- Maths
- Irish
- History
- Geography
- Science
- Art
- Metalwork
- Woodwork
- RE
- French
- Spanish
- Business
- Music
- Home Economics
- CSPE
- SPHE
- Computers
- PE

# Daily routine

You should arrive to school by 8.30, to give yourself time to get to your locker and get ready for the day.

Everyone goes to tionól (morning assembly) for 8:48am. Your year head and class tutors are in charge of tionól.

Then the bell will sound and everyone goes Period 1 at 9am.

Every class is 58 minutes long and takes place in a different classroom.

At the end of the class a bell will sound and you will go to your next class with a new teacher.

## **This is how our day is timetabled**

Tionól (assembly): 8.48- 9.00

Period 1: 9.00-9:58

Period 2: 9:58-10:56.

**Small break (sos) is from 10:56-11.11 am.**

Period 3: 11.11-12.09 pm

Period 4: 12.09-1.07 pm

**Big break (lón) is from: 1.07-1.42 pm.**

Period 5: 1:42-2:40

Period 6: 2:40-3:38 pm.

Home time: 3:38 pm

**Half day Friday (1.07 pm)!**



**THIS a sample timetable. Your timetable will be different.**

	8:00	9:00	10:00	11:00	12:00	13:00	14:00					
	P1		P2		P3		P4		P5		P6	
Mon	08.4 Cao Irish B31 A15 Ben Newfz2 Def Default	09:00-09:56 Physical Education PE 2 NewPE2 Default	09:58-10:56 Home Economics A23 Home Ec Donnelly, Jack Default	11:11-12:09 Civic, Social and Political Ed A18 Barry, Shane Default	12:09-13:07 Geography A01 Cunningham, Katrina Default	13:42-14:40 Mathematics B18 [Carville, Niamh J] Nakazw Default	14:40-15:38 Visual Art A19 Art Cunningham, Theima Default					
Tue	08.4 Cao Physical Education B31 PE 2 Ben NewPE2 Def Default	09:00-09:56 Home Economics B31 A23 Home Ec Ben Donnelly, Jack Def Default	09:58-10:56 Spanish B04 Murphy, Nuata Default	11:11-12:09 Religious Education B31 Berigan, Lauren Default	12:09-13:07 History A18 Barry, Shane Default	13:42-14:40 Science B27 Tiered NewBio Default	14:40-15:38 English B17 Reid, Rebecca Default					
Wed	08.4 Cao Home Economics B31 A23 Home Ec Ben Donnelly, Jack Def Default	09:00-09:56 Science B31 B27 Tiered Ben NewBio Def Default	09:58-10:56 Spanish B04 Reid, Rebecca Default	11:11-12:09 Irish A15 Newfz2 Default	12:09-13:07 History A18 Barry, Shane Default	13:42-14:40 Mathematics B18 Carville, Niamh Default	14:40-15:38 Spanish B04 NewSpan Default					
Thu	08.4 Cao Science B31 B27 Tiered Ben NewBio Def Default	09:00-09:56 English B31 B19 Ben Reid, Rebecca Def Default	09:58-10:56 Spanish B04 NewSpan Default	11:11-12:09 English B19 Reid, Rebecca Default	12:09-13:07 Civic, Social and Political Ed A18 Barry, Shane Default	13:42-14:40 Social, Personal and Health B31 Berigan, Lauren Default	14:40-15:38 Coding/Information Technol B16 IT NewSPHE Default					
Fr	08.4 Cao English B31 B19 Ben Reid, Rebecca Def Default	09:00-09:56 Mathematics B18 [Carville, Niamh J] Nakazw Default	11:11-12:09 Visual Art A19 Art Cunningham, Theima Default	12:09-13:07 Geography A01 Cunningham, Katrina Default								
			SOS 10.56 - 11.11		LON 1.07 - 1.42							

**CHALLENGE:**



USE THE SAMPLE TIMETABLE TO FIGURE OUT THE QUESTIONS BELOW.

1. How many times a week does this student study Spanish?

\_\_\_\_\_

2. What day is PE on?

\_\_\_\_\_

3. What room is Irish in?

\_\_\_\_\_

4. Find the name of the geography teacher.

\_\_\_\_\_

5. What room is assembly in?

\_\_\_\_\_

6. What is after lunch on Tuesday?

\_\_\_\_\_

7. What time is sos (morning break)?

\_\_\_\_\_

8. What time is lón (lunch)?

\_\_\_\_\_

9. Find the subject, room and teacher for Wed P4.

\_\_\_\_\_

10. Final (trick) question... What is after lunch on Friday?

\_\_\_\_\_

